



SuperStack II Hub 100

Stackable Fast Ethernet Hub

A flexible, easy-to-configure 100BASE-T hub for economical, high-speed connections in departmental LANs

SuperStack II Hub 100 combines the economy and convenience of a stackable hub with 100 Mbps Fast Ethernet performance. You can use SuperStack II Hub 100 hubs along with other 3Com SuperStack or SuperStack II devices to provide a variety of connectivity options in departmental and remote site LANs. The Hub 100 is available for 100BASE-TX or 100BASE-T4.



SuperStack™ II Hub 100 hubs combine the performance advantages of 100 Mbps Fast Ethernet technology with the manageability, flexibility, and economy of a stackable hub platform.

SuperStack II Hub 100 is scalable, allowing you to keep your initial Fast Ethernet investment low while enabling you to increase port density, enhance system

reliability, and add SNMP management. Because they are part of 3Com's SuperStack system architecture, SuperStack II Hub 100 hubs can be integrated with a full range of other network devices, technologies, and services in one managed stack. All types of Fast Ethernet (TX, T4, FX) can be supported in one stackable system.

Key Benefits:

- **Enhanced Performance.** Full 100 Mbps connectivity significantly boosts network performance. Stackability provides high port density at low cost.
- **SNMP management.** The optional SuperStack II Hub 100 Management Unit delivers full SNMP management. 3Com's Transcend™ application lets you administer hub ports and adapters together as one system.
- **RMON management.** Remote Monitoring (RMON) automates management to reduce network traffic and enhance network analysis.
- **End-to-end Fast Ethernet.** 3Com offers a full line of Fast Ethernet network devices—hubs, switches, adapters, and routers—for building flexible, cost-effective high-speed networks.
- **Flexible backbone connections.** A 100BASE-TX Transceiver Module with an RJ-45 connector for Category 5 UTP wiring, or a 100BASE-FX Transceiver Module with a 62.5/125µ SC fiber connector permits a wider range of backbone/downlink connections.
- **SuperStack systems.** 3Com's SuperStack systems let you combine hubs, switches, routers, and a redundant power system in one robust, easily managed stack.
- **Support for TX or T4.** Hub 100 TX and T4 hubs can be stacked together to easily support any Category of UTP cable.
- **Fully Downward Compatible** with LinkBuilder FMS100 Hubs and LinkBuilder FMS 100 Management units.





Simple, Economical Fast Ethernet Connections

SuperStack II Hub 100 hubs make it easy to boost the performance of Ethernet LANs to 100 Mbps throughput without a high initial upgrade cost.

Up to eight SuperStack II Hub 100 TX or T4 hubs can be stacked—yielding up to 104 ports per stack (comprising one logical repeater), in one unsegmented Fast Ethernet network. You can use the optional SuperStack II Hub 100 Management Unit to extend SNMP control across the entire Hub 100 stack.

SuperStack II Hub 100 hubs can operate seamlessly with existing 10BASE-T Ethernet LANs using 3Com's SuperStack II products, including the Switch 1000 Ethernet/Fast Ethernet switch or Switch 3000 Fast Ethernet switch.

Comprehensive Management

You can manage all the SuperStack II Hub 100 hubs in a stack by simply adding a Management Unit. This device provides comprehensive Simple Network Management Protocol (SNMP) management for up to seven TX or T4 hubs.

A combination of SmartAgent™ intelligent agents and smart ASICs in each device take on much of the burden of managing and polling. This decreases the computational load at the management console and reduces management traffic on the backbone and WAN.

Among the management options offered with 3Com hubs are Transcend WorkGroup Manager and Transcend Enterprise Manager for Windows™ or

UNIX. Transcend features include a full set of software tools for configuring, monitoring, and troubleshooting network devices. Using a unified graphical interface, these Transcend applications allow you to oversee and control the entire LAN—from the adapters in each PC and server to the hubs and interconnecting devices residing in SuperStack II.

RMON Functionality

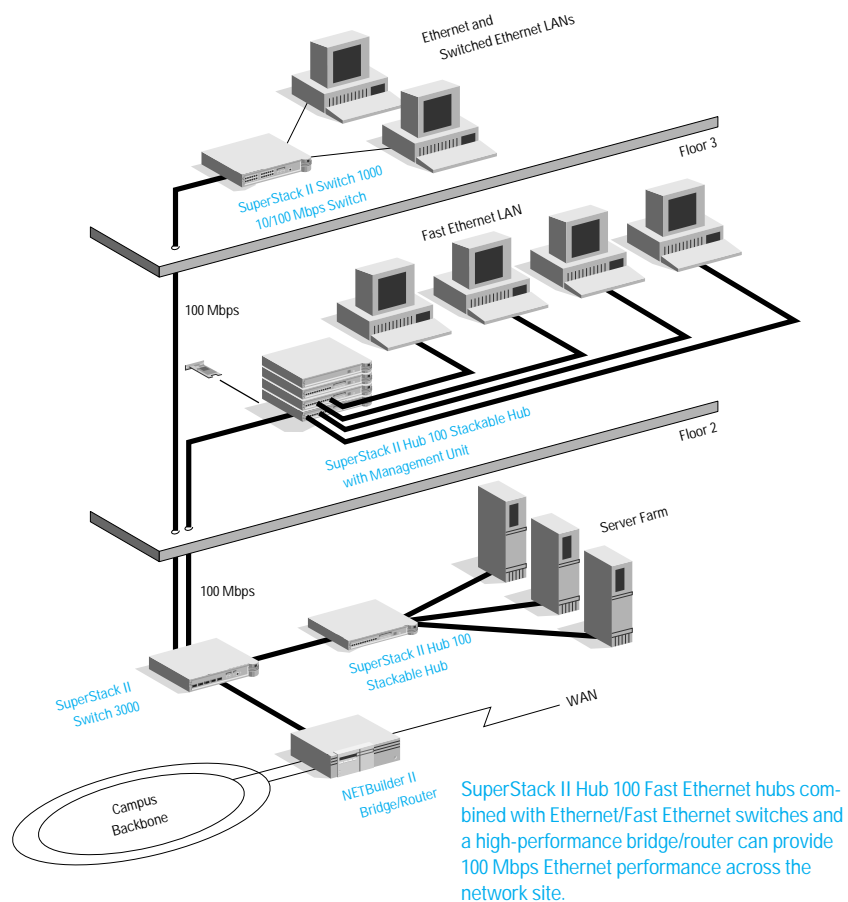
RMON support comes standard with the Hub 100 Management Unit, and allows industry standard tracking, storing and analysis of network traffic, as well as powerful diagnostic capabilities. The RMON agent reduces the SNMP traffic over LAN and WAN connections, improves management console response time and reduces troubleshooting costs. SmartAgents enhance RMON by adding autocalibration of thresholds and action-on-event.

Security and Fault Tolerance

SuperStack II Hub 100 hubs are equipped with a number of simple to use features that help safeguard against security breaches:

- Disable on power-up switch ensures only authorized users have access to network resources
- Audit Log automatically tracks changes involving users and devices on the network, giving the manager a complete picture of management activity
- Multiple User Levels ensure that only authorized users have access to critical management functions
- Passwords can be used to identify network managers

In addition, the optional Redundant Power System delivers a high level of fault-tolerance to SuperStack II Hub 100 hubs and other devices in a SuperStack II configuration.



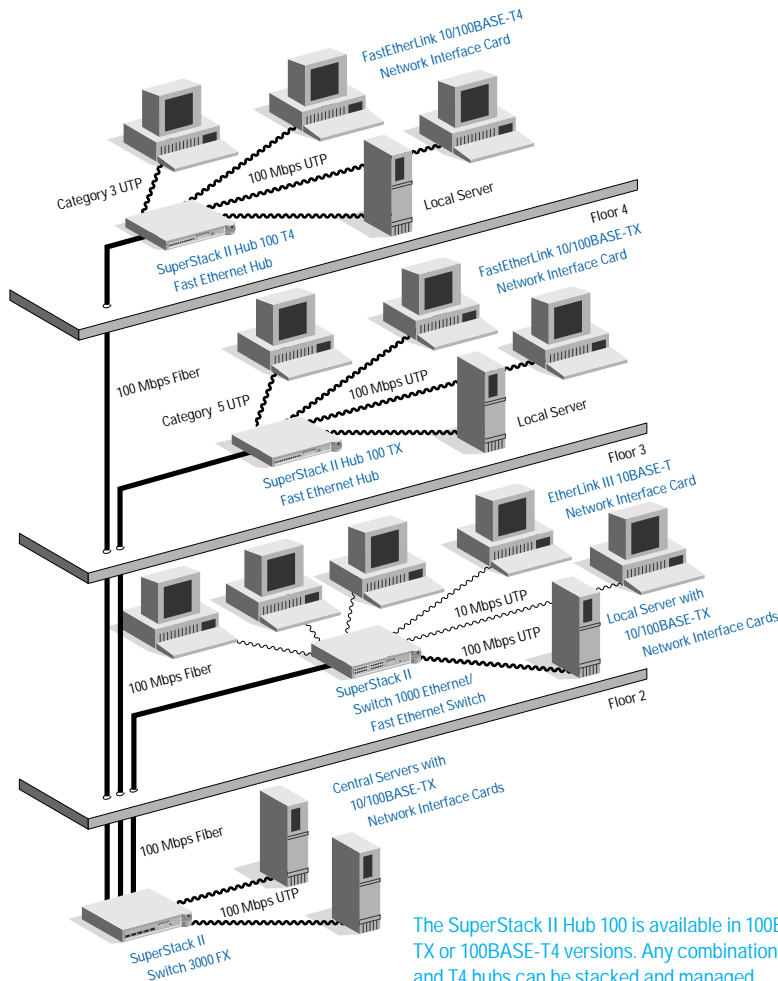
Complete Fast Ethernet Solution

3Com provides a full complement of Fast Ethernet products, giving you end-to-end 100BASE-T capabilities. In addition to the SuperStack II Hub 100 hub, 3Com offers the SuperStack II Switch 1000 Ethernet/Fast Ethernet workgroup switch, SuperStack II Switch 3000 Fast Ethernet Switch, Fast EtherLink® 10/100 adapters, and a Fast Ethernet module for the NETBuilder II® bridge/router.

Modular Backbone/Downlink Connections

SuperStack II Hub 100 hubs offer two options for server backbone and downlink connections using Downlink Transceiver Modules:

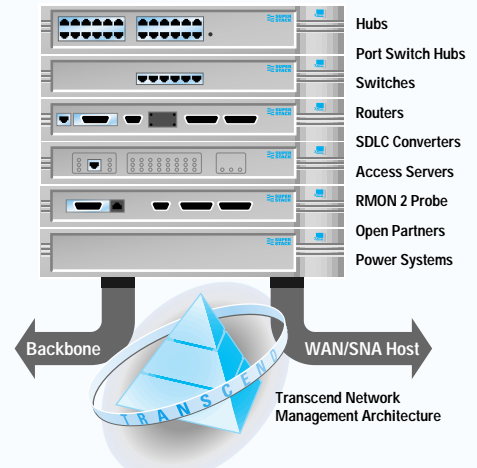
- The SuperStack II Hub 100 100BASE-TX Transceiver Module provides an RJ-45 connector for Category 5 unshielded twisted-pair (UTP) wiring conforming to the 100BASE-TX Fast Ethernet standard
- The SuperStack II Hub 100 100BASE-FX Transceiver Module is equipped with a 62.5/125µ SC fiber connector for 100BASE-FX backbone connections



The SuperStack II Hub 100 is available in 100BASE-TX or 100BASE-T4 versions. Any combination of TX and T4 hubs can be stacked and managed together to simply support any type of UTP cable. 100BASE-TX supports Category 5 UTP cable while 100BASE-T4 uniquely supports 100Mbps on Category 3 or 4 UTP. The 100BASE-FX transceiver module can be used with either hub to provide fiber backbone connections.



SuperStack II



3Com's SuperStack II system gives you a flexible, cost-effective connectivity solution for local, wide area, and SNA networks. You can combine diverse technologies and network services in one stacked system, strengthen it with uninterruptible and redundant power systems, and manage it all with Transcend management software.

As an important part of 3Com's Transcend Networking framework, SuperStack II will meet your evolving network needs—future-proofing your network investment.

A single SuperStack II system provides connections for a range of network environments and protocols: Ethernet, 100BASE-T Fast Ethernet, Token Ring, FDDI, ISDN, X.25, Frame Relay, and ATM. Depending on your needs, you can build SuperStack II systems for virtually any network environment. Capabilities include:

- Shared and Port Switched hubs for flexible workgroup connectivity with SNMP management
- Industry-leading physical layer support for Token Ring networks
- Full RMON support for Ethernet, Fast Ethernet, and Token Ring networks, as well as a dedicated RMON 2 Probe
- Full range of switches to boost performance in high-speed client/server LANs
- Full, multiprotocol network access for teleworkers or users at other off-site locations
- Routing between central site and branch offices using innovative Boundary Routing® architecture or conventional routing software for multiple WAN choices, including ISDN
- SNA-to-LAN conversion linking local and remote offices to an SNA host system
- Choice of power systems to ensure uninterrupted network operation

For smaller offices of less than 20 users, our OfficeConnect™ products can be used to complement SuperStack II.



Specifications

SuperStack II Hub 100 Stackable Fast Ethernet Hub

3Com Corporation
 P.O. Box 58145
 5400 Bayfront Plaza
 Santa Clara, CA 95052-8145
 Phone: 800-NET-3Com
 or 408-764-5000
 Fax: 408-764-5001
 World Wide Web:
<http://www.3com.com>

3Com ANZA
 ANZA East: 61 2 9937 5000
 ANZA West: 61 3 9866 8022

3Com Asia Limited
 Beijing, China: 86 10 68492 568
 Shanghai, China: 86 21 6374 0220
 Ext. 6115

Hong Kong: 852 2501 1111
 India: 91 11 644 3974, 644 6123
 Indonesia: 62 21 523 9181
 Korea: 82 2 319 4711
 Malaysia: 60 3 732 7910
 Singapore: 65 538 9368
 Taiwan: 886 2 377 5850
 Thailand: 662 231 8151 4

3Com Benelux B.V.
 Belgium: 32 725 0202
 Netherlands: 31 30 6029700

3Com Canada
 Calgary: 403 265 3266
 Montreal: 514 874 8008
 Ottawa: 613 566 7055
 Toronto: 416 498 3266
 Vancouver: 604 434 3266

3Com European HQ
 44 1628 897000

3Com France
 33 1 69 86 68 00

3Com GmbH
 Austria: 43 1 513 4323
 Czech and Slovak Republics:
 42 2 21845 800
 Berlin, Germany: 49 30 3498790
 Munich, Germany: 49 89 627320
 Hungary: 36 20 394 695
 Poland: 48 22 6451351
 Switzerland: 41 31 996 14 14

3Com Ireland
 353 1 820 7077

3Com Japan
 81 3 3345 7251

3Com Latin America
 U.S. Headquarters: 408-764-6075
 Argentina: 54 1 814 1391
 Brazil: 55 11 546 0869
 Chile: 56 2 633 9242
 Mexico: 52 5 520 7841
 3Com Northern Latin America
 Miami, Florida: 305-261-3266
 Colombia: 57 1 616 2884
 Peru: 51 1 221 5399
 Venezuela: 58 2 953 8122

3Com Mediterraneo
 Milan, Italy: 39 2 253011
 Rome, Italy: 39 6 5922769
 Spain: 34 1 3831700

3Com Middle East
 971 4 349049

3Com Nordic AB
 Denmark: 45 39 27 85 00
 Finland: 358 0 435 420 67
 Norway: 47 22 18 40 03
 Sweden: 46 8 632 56 00

3Com South Africa
 27 11 807 4397

3Com UK Ltd.
 Edinburgh: 44 1312 208228
 Manchester: 44 1618 737717
 Marlow: 44 1628 897000

Dimensions and Weight

Width: 17.32 in/44 cm

Depth: 12 in/30.5 cm

Height: 1.72 in/4.36 cm

SuperStack II Hub 100 Weight:
12 lbs/5.4 kg

SuperStack II Hub 100
Management Unit Weight:
11 lbs/5.0 kg

Connectors and Cables

SuperStack II Hub 100 TX

12 RJ-45 ports supporting
100BASE-TX transmission over 2
pair Category 5 UTP cable

SuperStack II Hub 100 T4

12 RJ-45 ports supporting
100BASE-T4 transmission over 4
pairs of Category 3, 4, or 5 UTP cable

Transceiver Interface Modules

1 Transceiver Interface Module slot
supported by 2 optional transceiver
modules:

- 100BASE-TX module with 1 RJ-45 connector supporting 100BASE-TX transmission over 2 pair category 5 UTP cable
- 100BASE-FX module with 1 SC connector supporting 100BASE-FX transmission over multi-mode duplex 62.5/125µ fiber

1 IEC320 power cord is included

SuperStack II Hub 100 Management Unit

1 DB-9 RS-232 Interface Port

1 IEC320 power cord included

Power Requirements

Power Supply: 100 to 240 VAC,
47 to 63 Hz

Power Consumption: 40 W

Power Inlet: IEC320

Fuse Protection: 2A

Heat Dissipation/Hour: 137 BTU

Environmental Ranges

Operating Temperature: 32° to 122° F
(0° to 45° C)

Operating Humidity: 10% to 90%
noncondensing

Storage Temperature: -22° to 140° F
(-30° to 60° C)

Storage Humidity: 10% to 95%
noncondensing

Indicators

Per Unit LEDs: power status,
collision, overtemp

Per Port LEDs: packet reception,
partition, link status

LCD unit ID indicator

Standards Compliance

SuperStack II Hub 100 TX

IEEE 802.3u. 100BASE-T compliant
100 Mbps baseband CSMA/CD stan-
dard (complies with IEEE standard
Class I repeater); ISO 8802/3

SuperStack II Hub 100 T4

IEEE 802.3u. 100BASE-T
compatible
100 Mbps baseband CSMA/CD stan-
dard (complies with IEEE standard
Class I repeater); ISO 8802/3

Electromagnetic Compatibility

FCC Part 15B Level A;
IEC 801-2.3.4; EN55022

Safety

UL; CSA; 94 V-0;
IEC 950/EN 60950 (TUV)

Mounting

Includes hardware for mounting in a
standard 19-inch rack

Ordering Information

Hub

SuperStack II Hub 100
100BASE-TX Hub 3C250A-TX/I

SuperStack II Hub 100
100BASE-TX
48 Port System 3C250A-TX/I-4PK

SuperStack II Hub 100
100BASE-T4 Hub 3C250-T4

SuperStack II Hub 100
100BASE-T4
48 Port System 3C250-T4-4PK

SuperStack II Hub 100
Management Unit 3C215A

Downlink Transceiver Modules

SuperStack II Hub 100
100BASE-TX
Transceiver Module
(Category 5 UTP) 3C252-TX

SuperStack II Hub 100
100BASE-FX
Transceiver Module
(62.5/125µ fiber) 3C262-FX

Accessories

SuperStack II Hub 100
Expansion Cable 3C219

One-Year Warranty

Each SuperStack II Hub 100 or man-
agement unit is covered by a one-
year limited warranty. Power
supplies and fans are warranted for
one year. To qualify for the war-
ranty, you must submit a registra-
tion card. Advance hardware exchange
is available during the first year;
thereafter, return the hub to 3Com
for repair. The warranty is not
offered where restricted or prohibited
by law.

To learn more about 3Com products, visit our World Wide Web site at <http://www.3com.com>.

© 3Com Corporation 1996. All rights reserved. 3Com is a publicly owned corporation (NASDAQ:COMS). 3Com, Boundary Routing, EtherLink, LANplex, LinkBuilder, NETBuilder, and NETBuilder II are registered trademarks, and FMS, SmartAgent, SuperStack, and Transcend are trademarks of 3Com Corporation. All specifications are subject to change without notice.